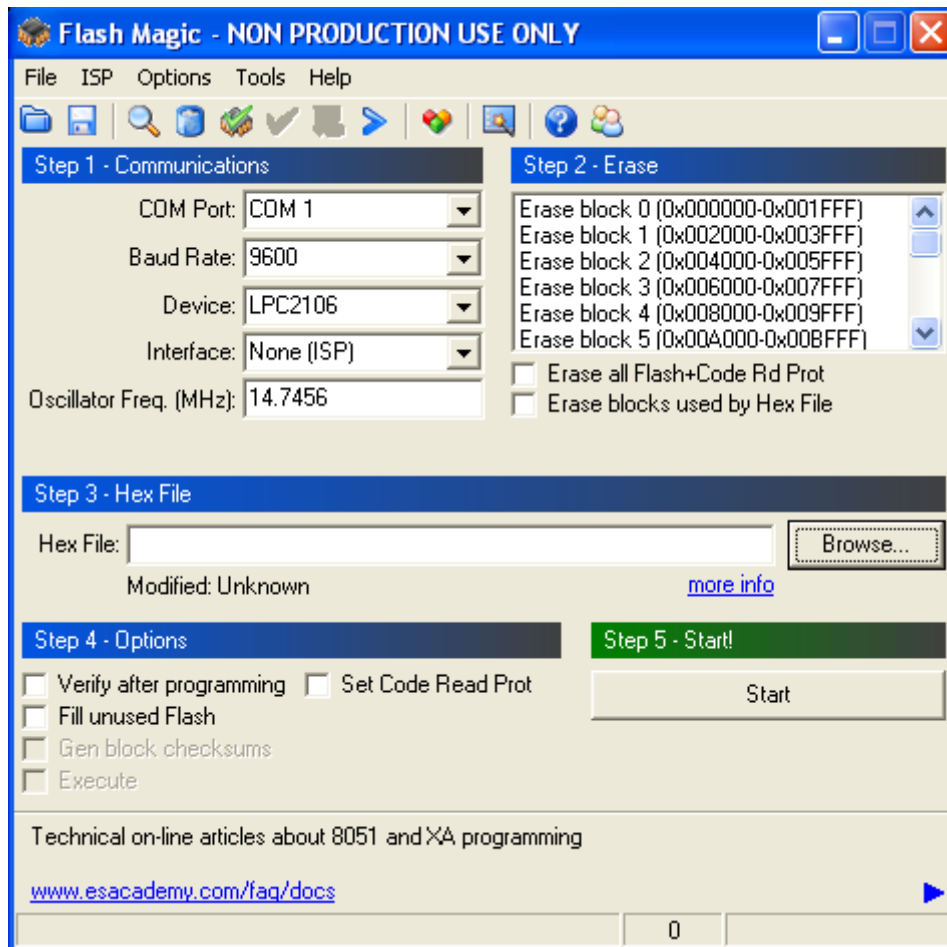


How to use LPC-P2106 with FlashMagic

When you use LPC-P2106 with FlashMagic, you should close jumpers JRST and BSL. Connect external power supply 9-12VDC to PWR jack. Connect straight 9 pin male – female RS232 cable to on-board female RS232 connector. Configurations of FlashMagic should be:



The COM Port depends on the Communications Port of your Computer's RS232. When you use this COM Port with FlashMagic – be sure that no other program is using it at this time.

Baud Rate: 9600

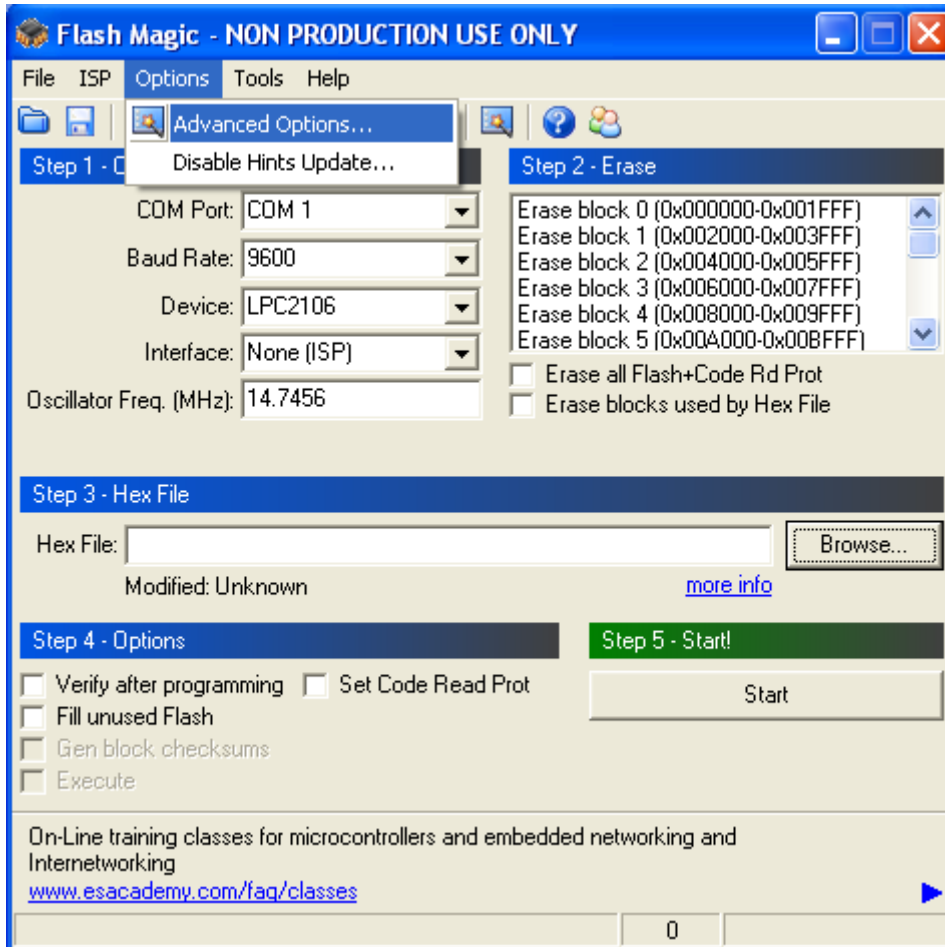
Device: LPC2106

Interface: None (ISP)

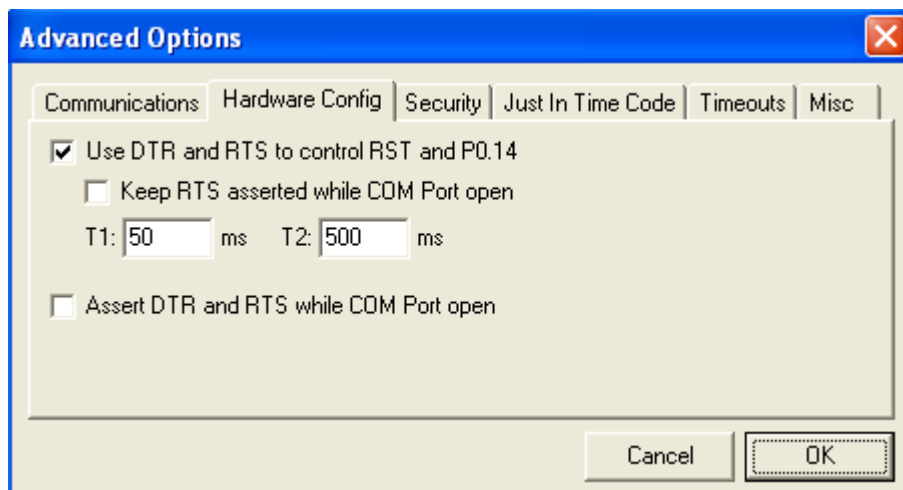
The Oscillator Frequency is equal to on-board crystal oscillator frequency.

Before start using FlashMagic, you should make some more configurations. They are shown on the next two pictures:

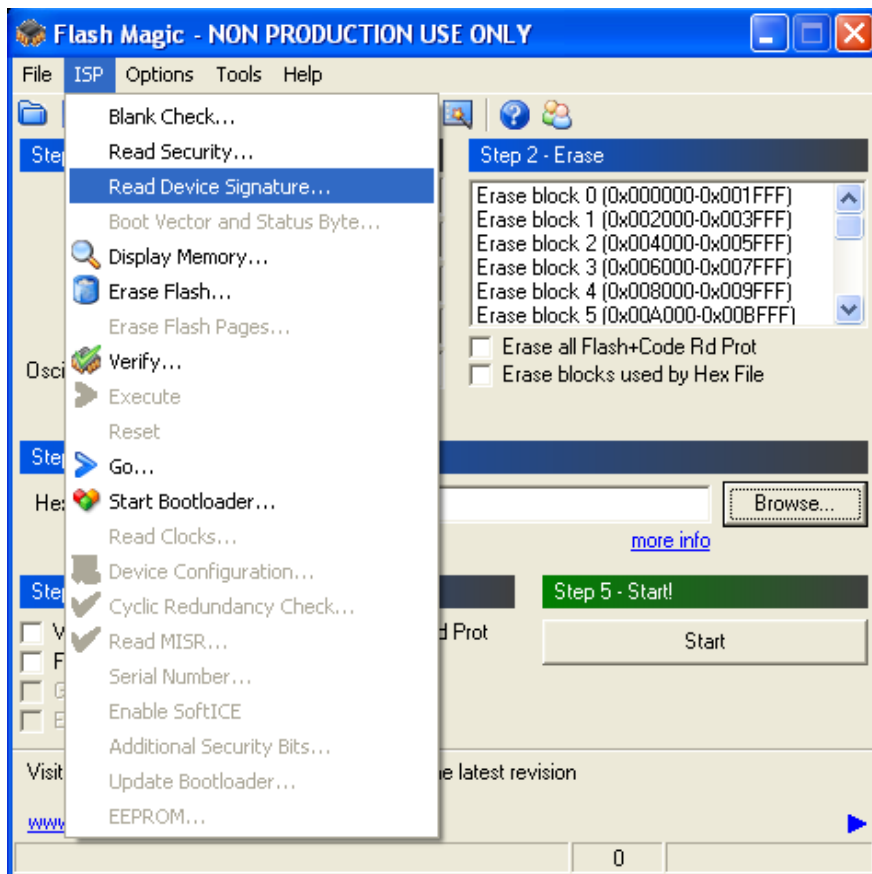
First: open from Options – Advanced options...



In Advanced Options window you should check "Use DTR and RTS to control RST and P0.14"



If you want to understand that FlashMagic is working with your board, you can check it as you try to Read Device Signature:



If everything is ok you will see this window with your device ID on it.

