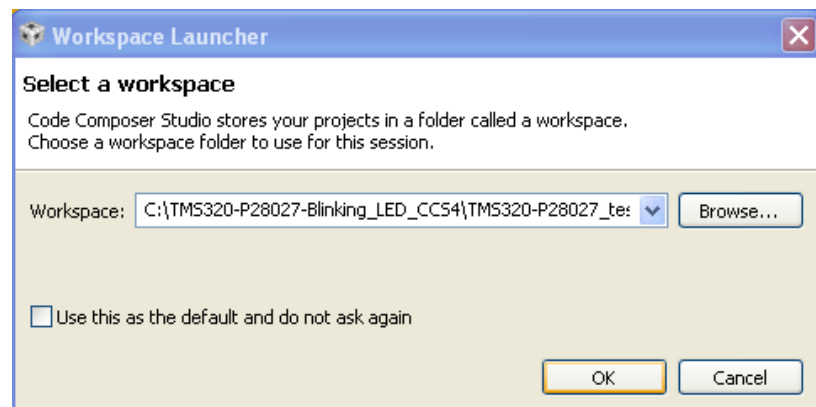
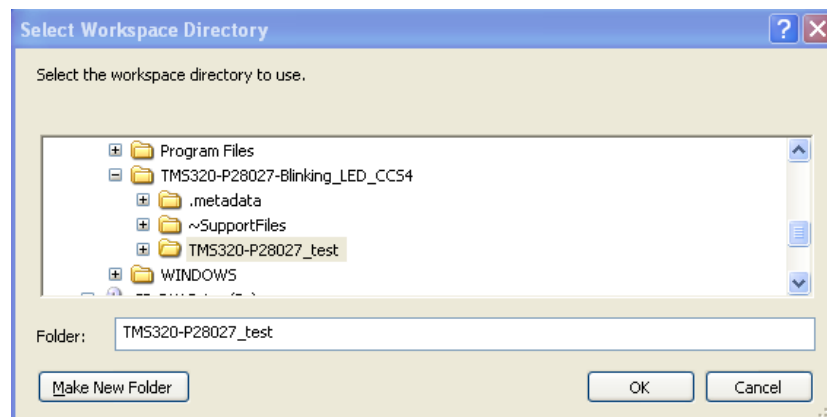
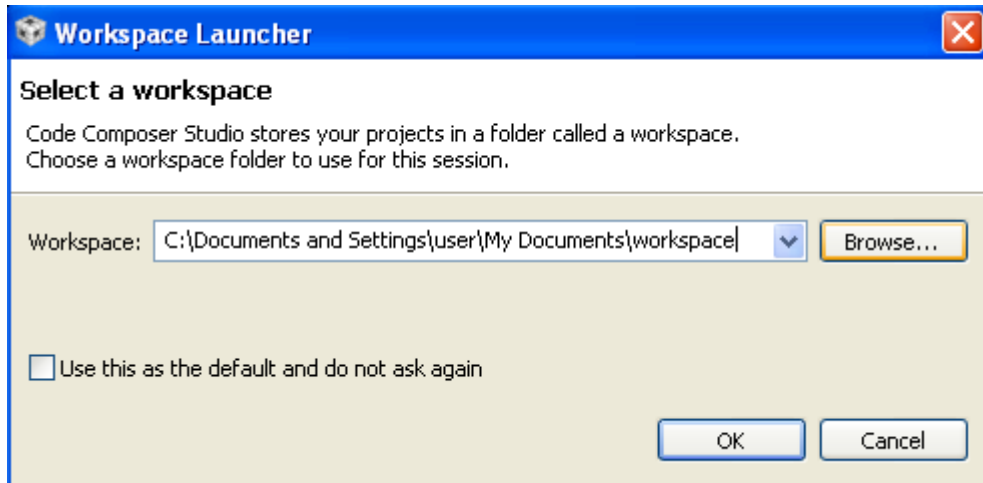


How to use OLIMEX TMX320-P28027 board

Download and install latest version of Code Composer Studio v4.x from www.ti.com.

After the installation has finished, you can run Code Composer Studio (CCS).

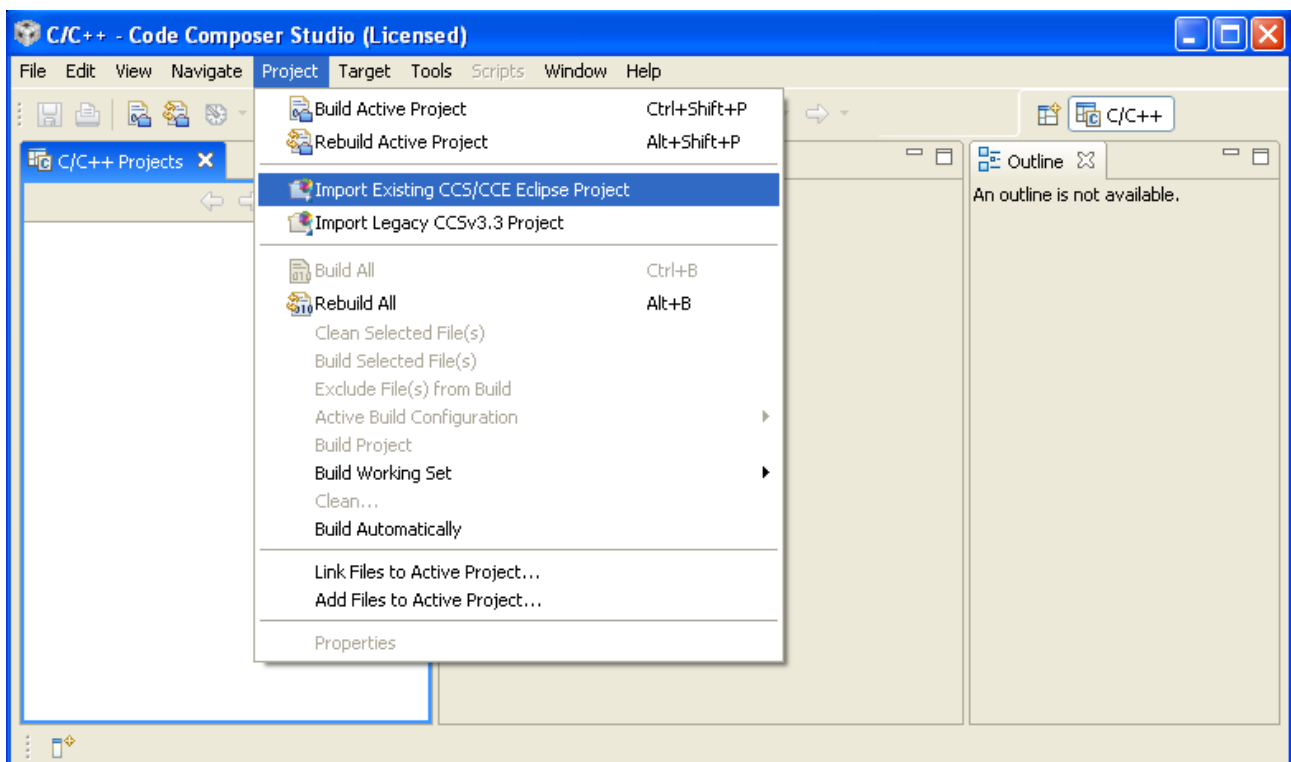
First you have to select your workspace directory by pressing “Browse...” button:



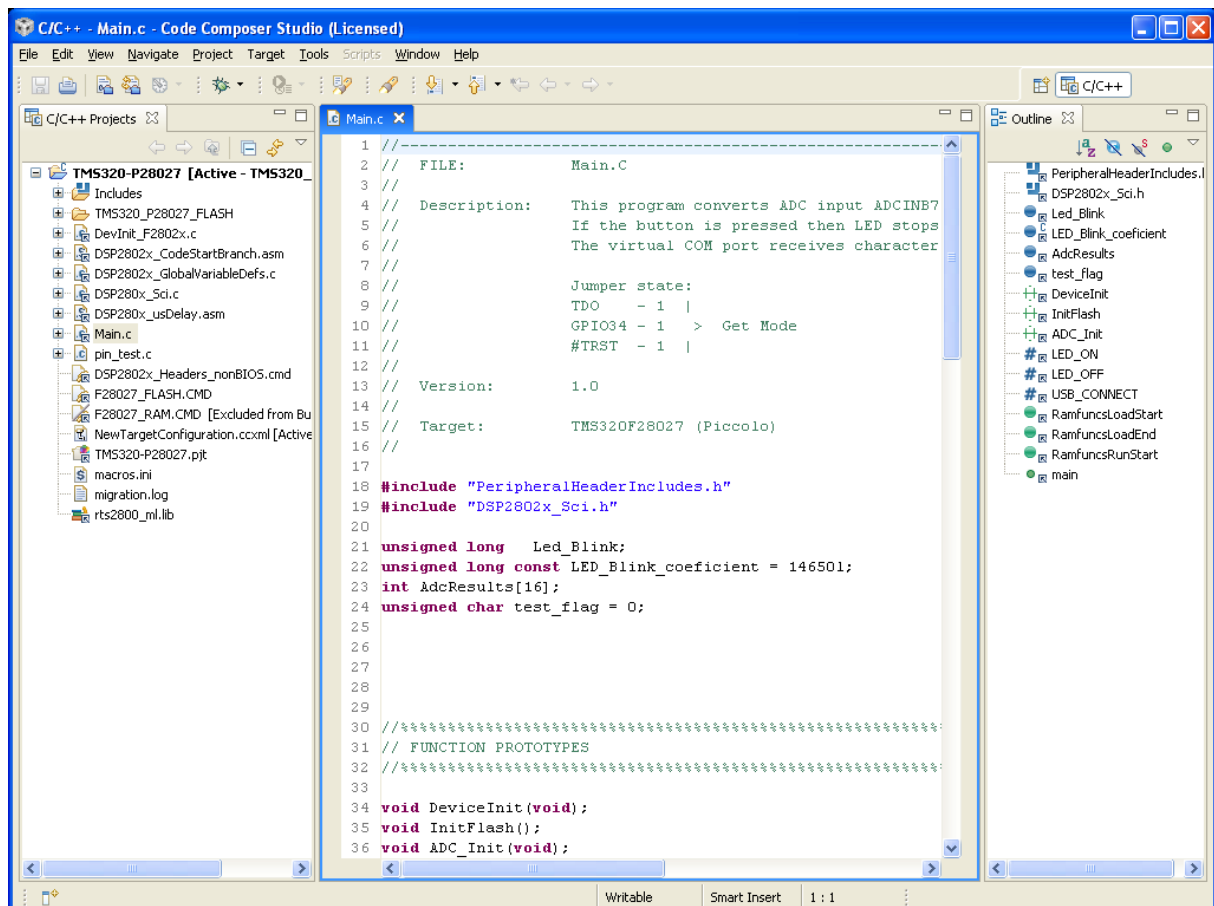
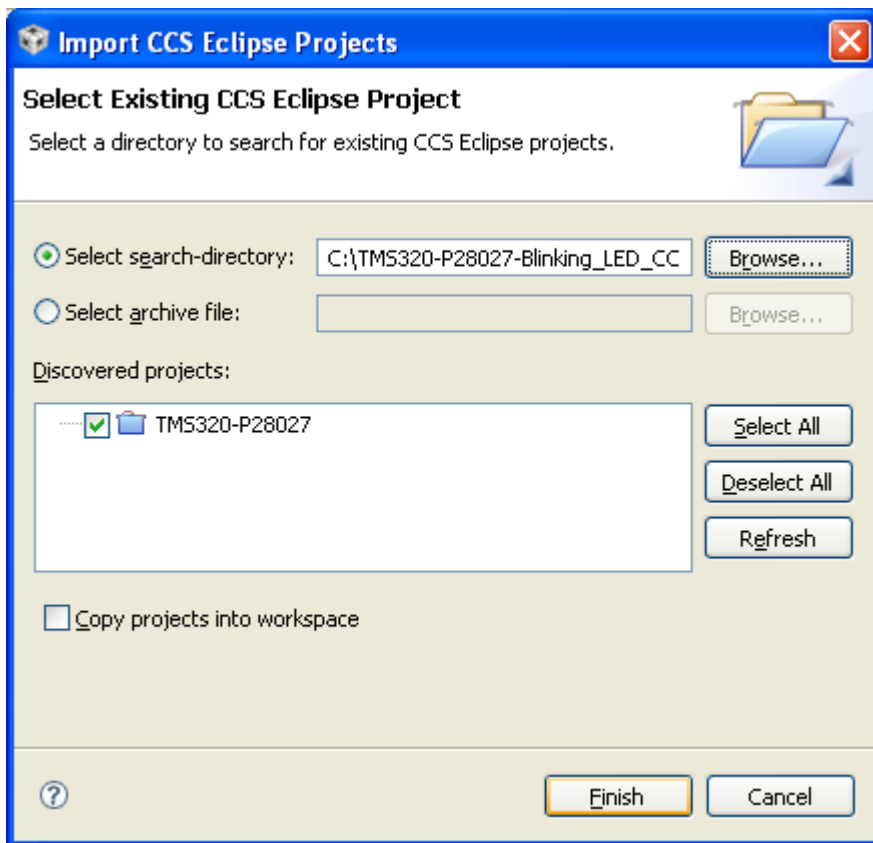
Press “OK” button and wait for a while, until CCS is loading:



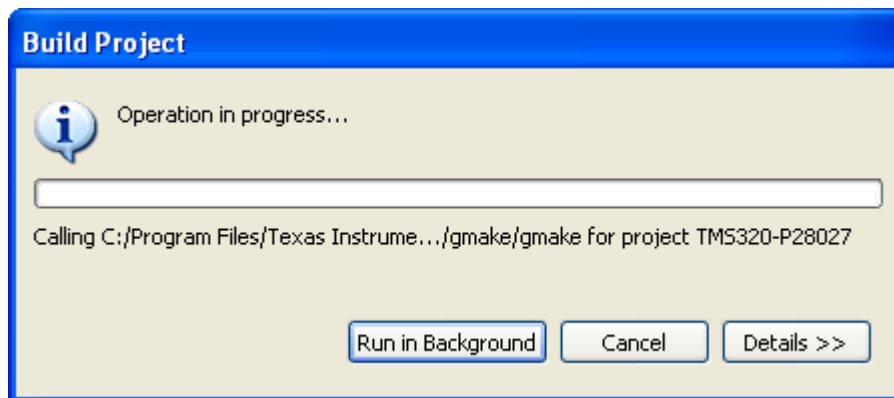
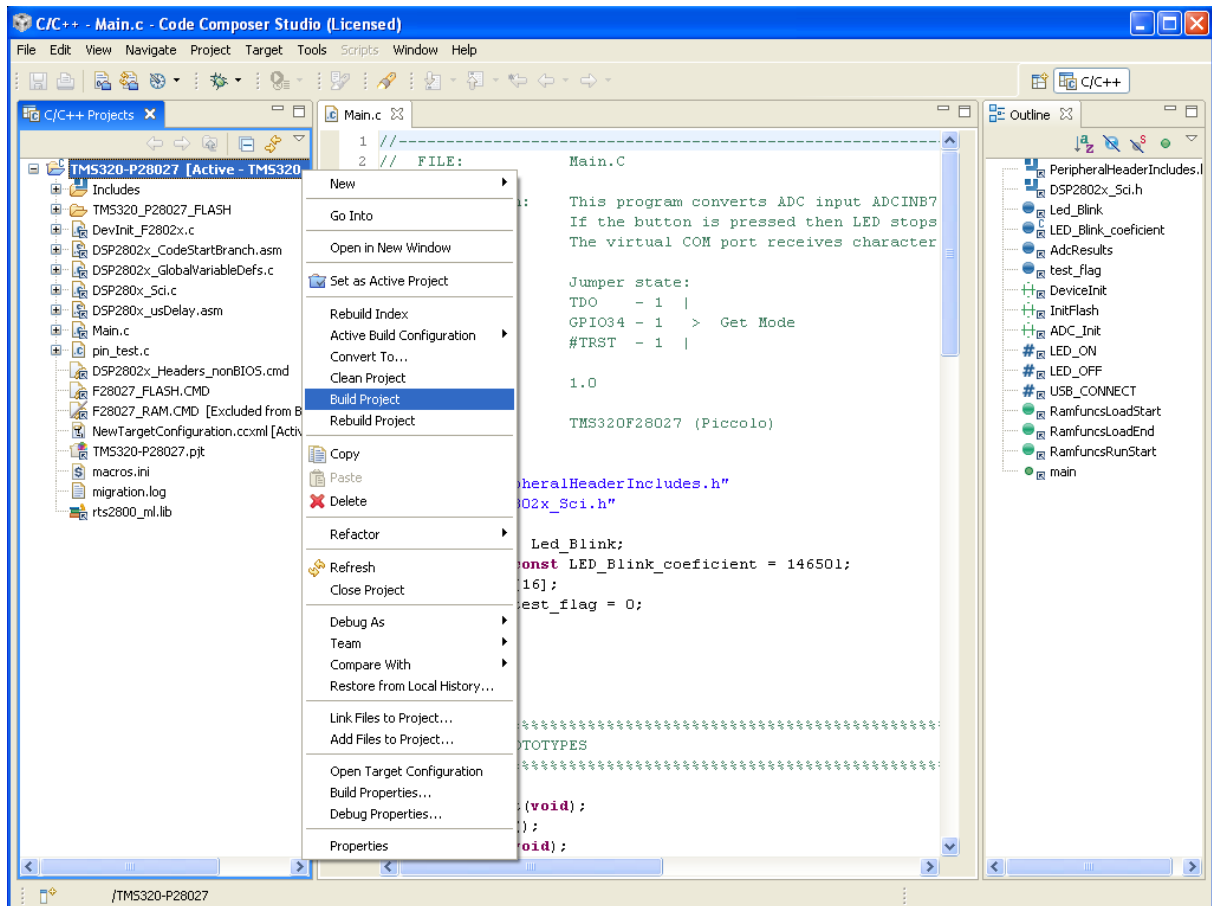
After the CCS opens, you have to Import Existing CCS/CCE Eclipse Project:



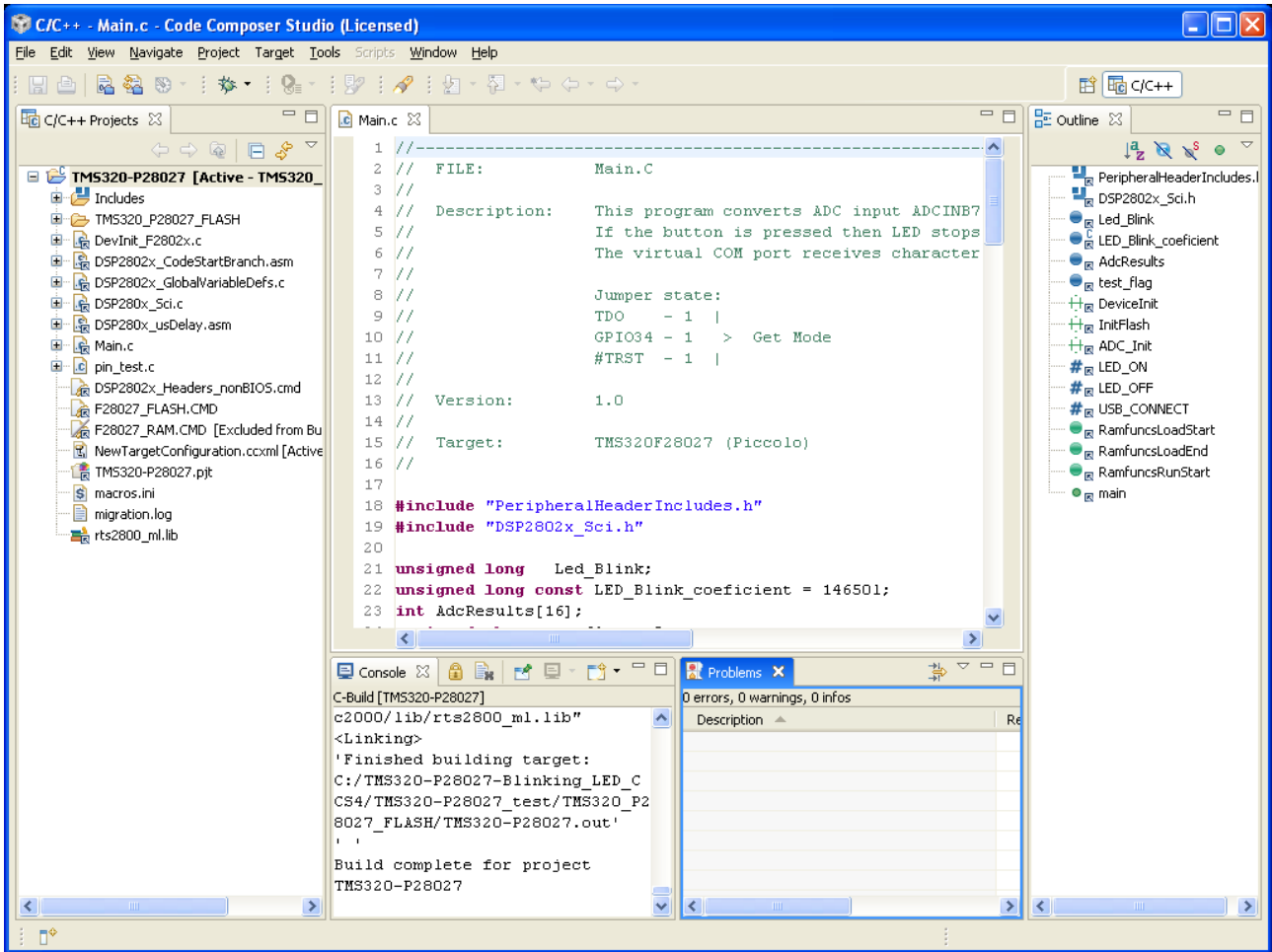
Browse the project directory and after that press "Finish" button:



After you have imported existing project you can build it:



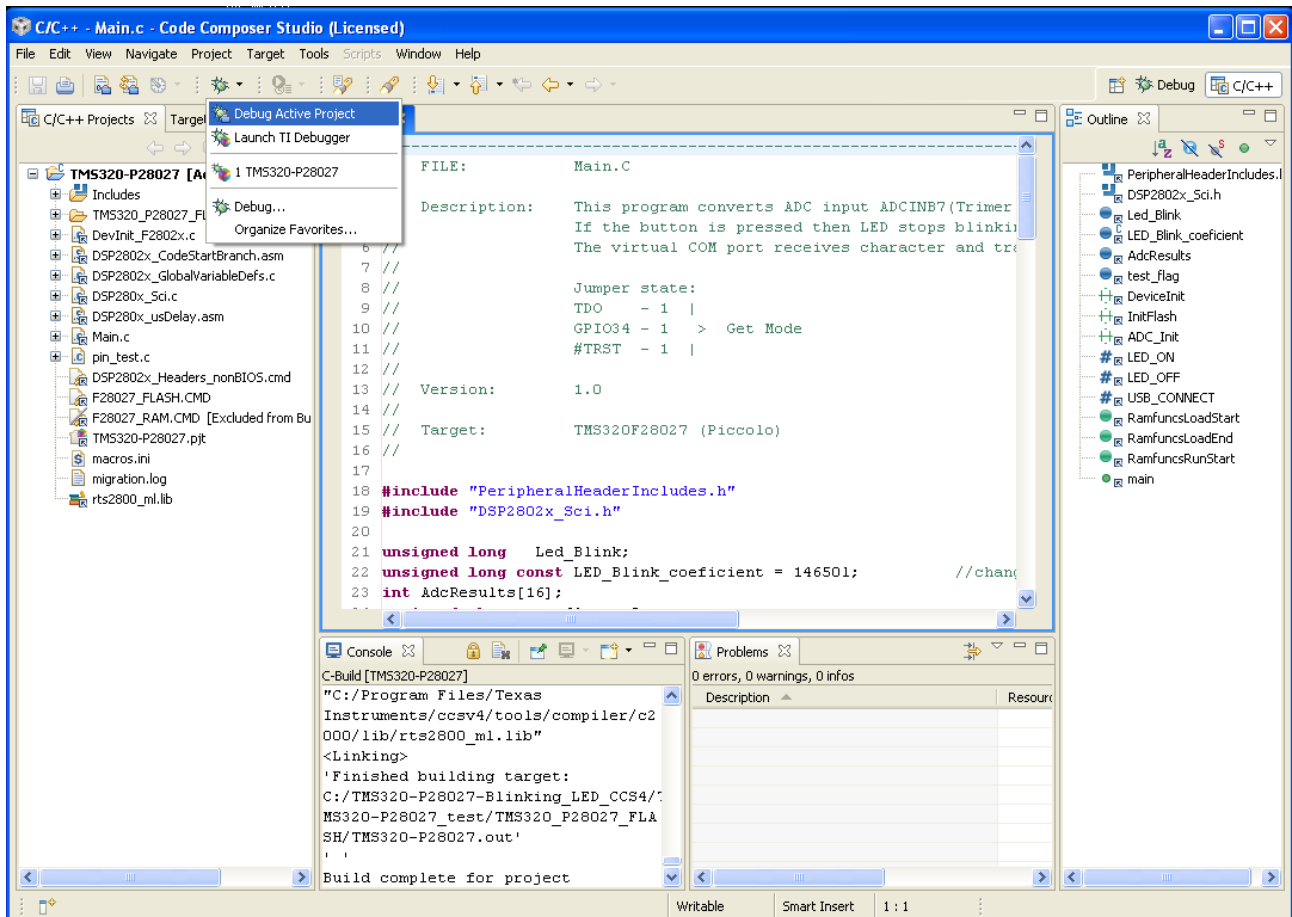
If everything is correct, in "Problems" tab, number of errors will be zero:



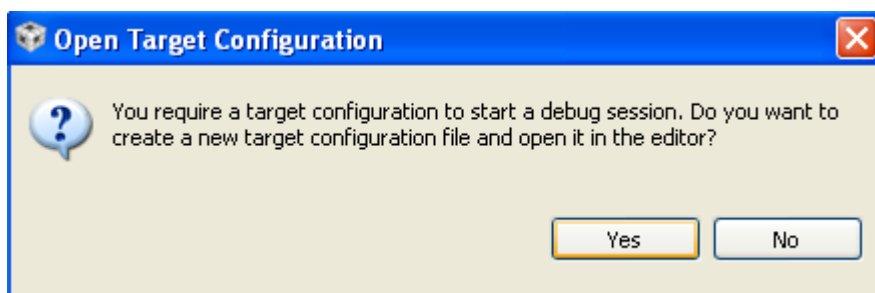
Now you have to plug-in Programmer/Debugger TMS320-JTAG-USB-V2 to your computer and wait until windows install the drivers automatically.



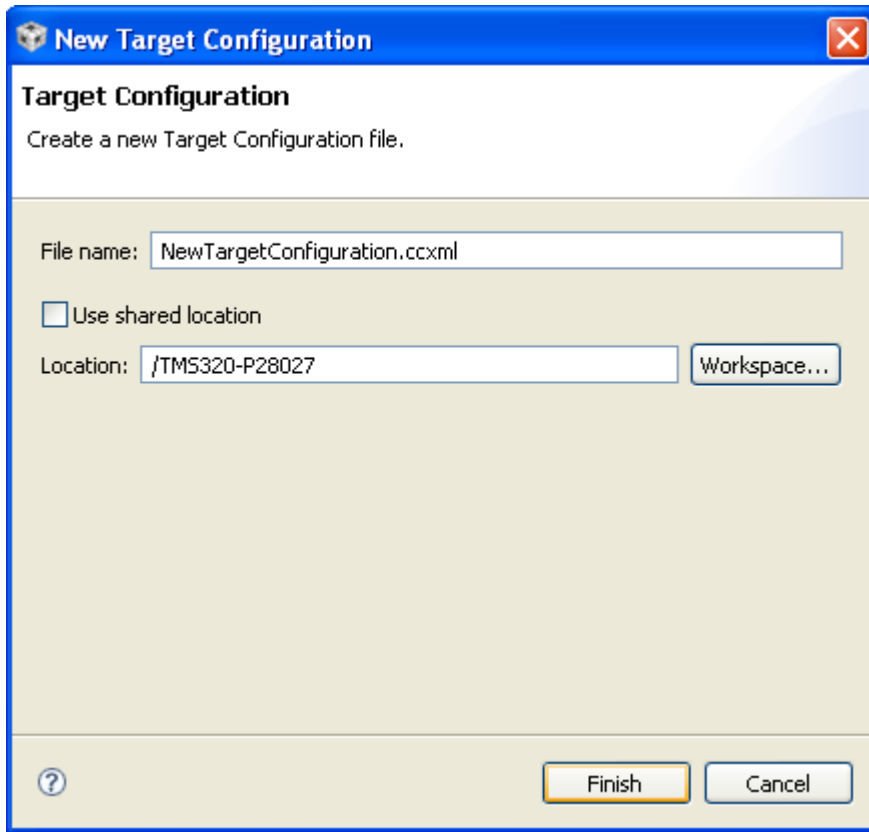
Click on the Debug Active Project button, or from menu Target select - Debug Active Project:



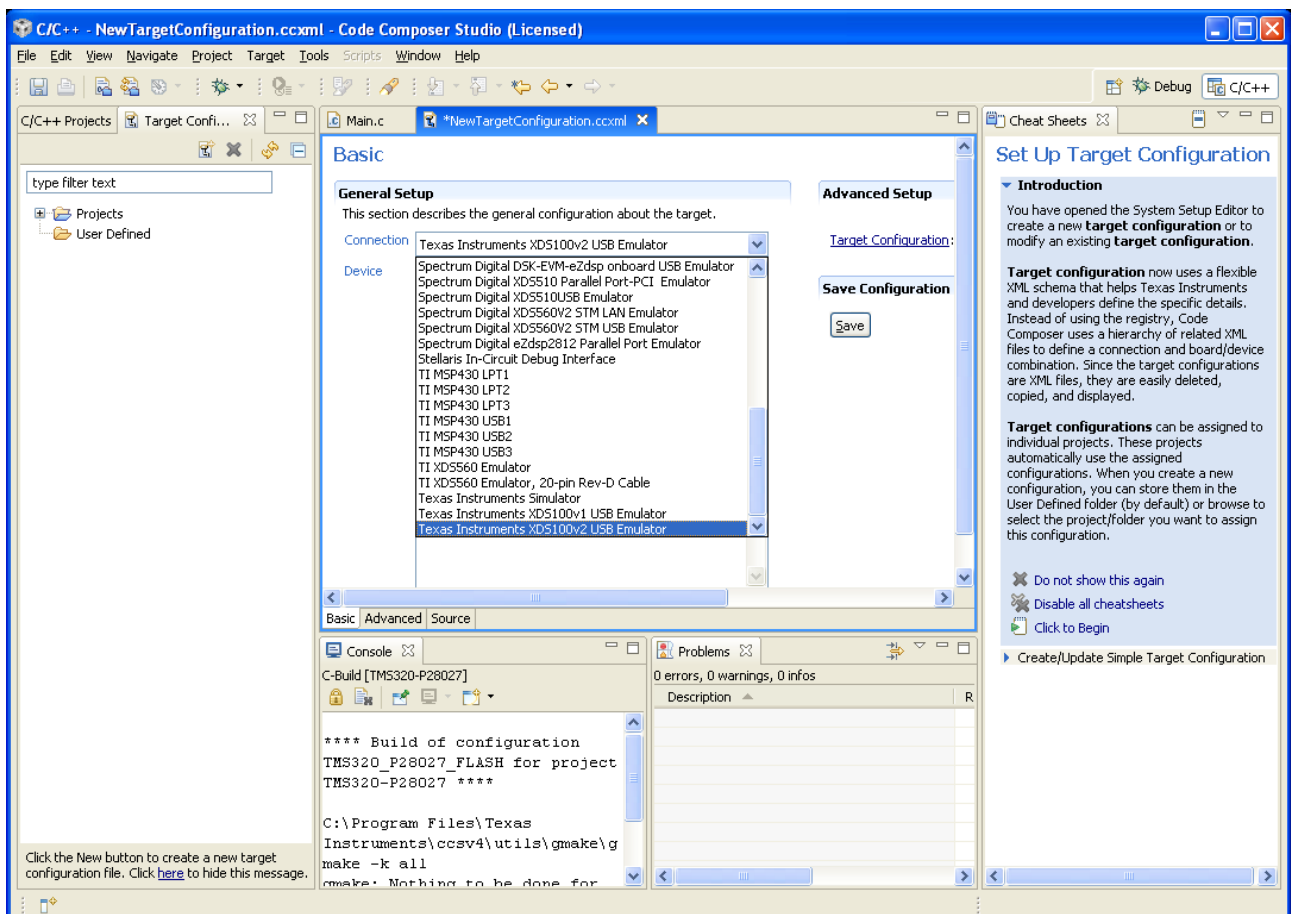
First, CCS will ask you for a target configuration:



Here press "Yes" button.

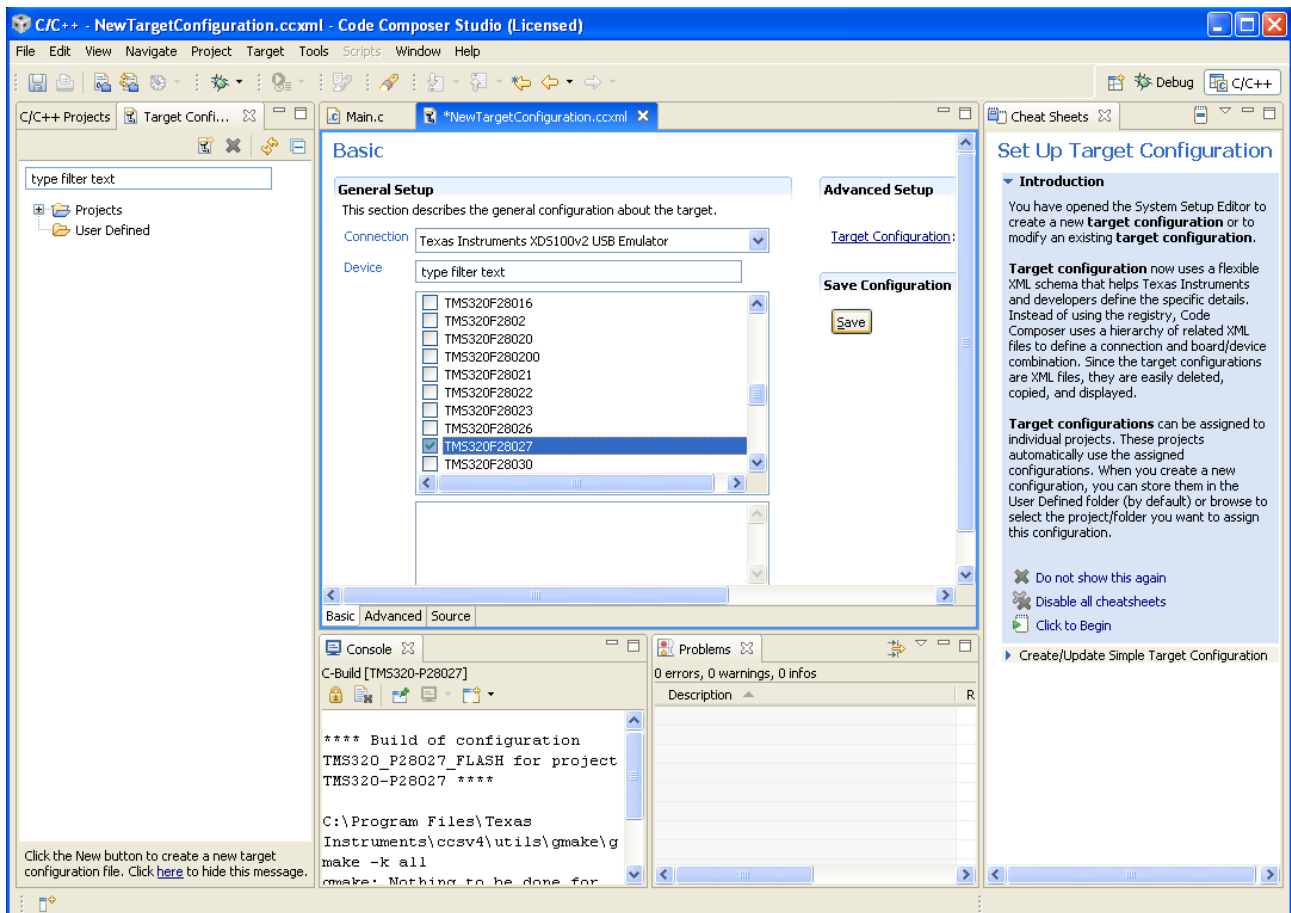


Here you can select the location of your new target configuration.

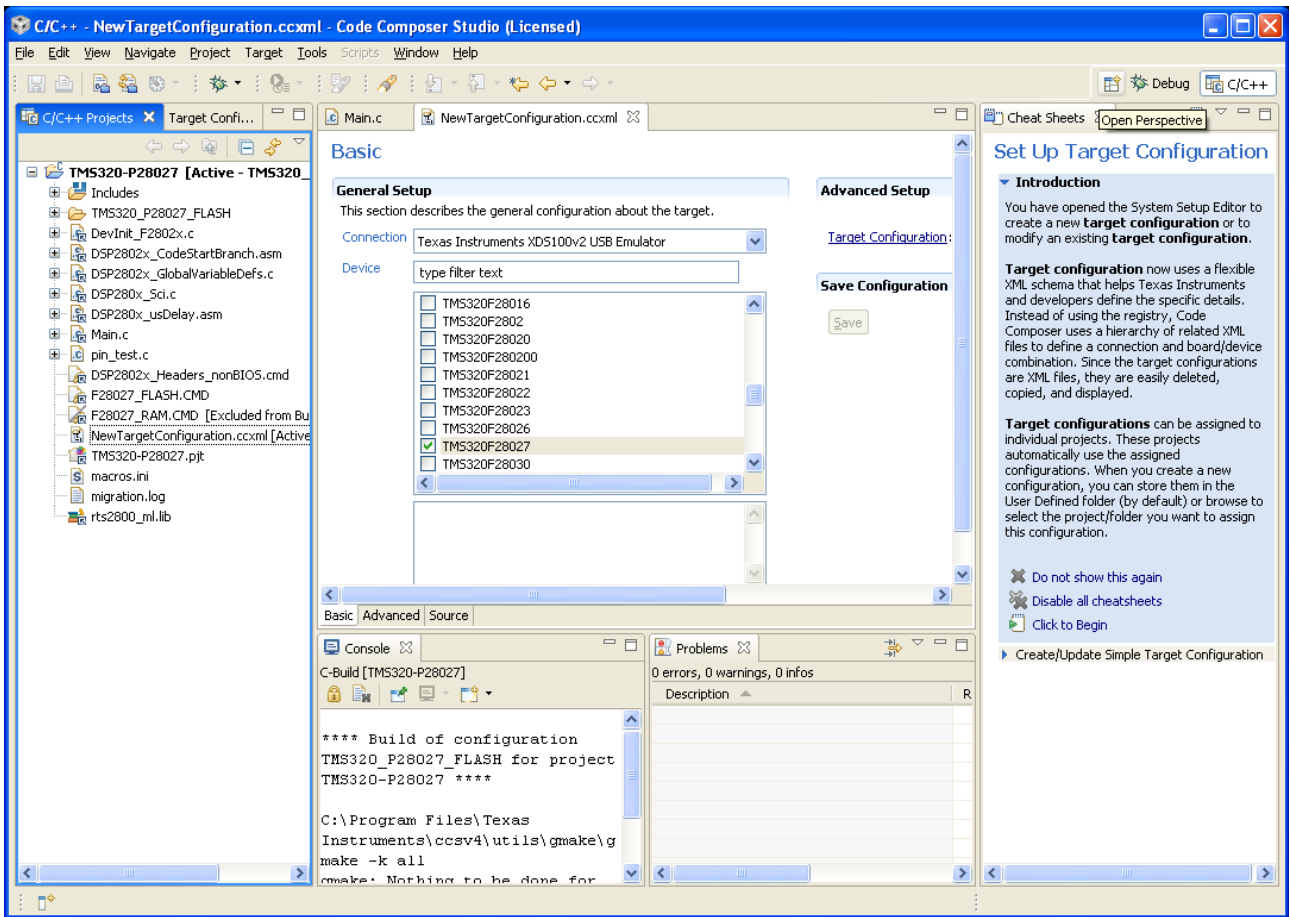


In “Connection” field, select “Texas Instruments XDS100v2 USB Emulator”

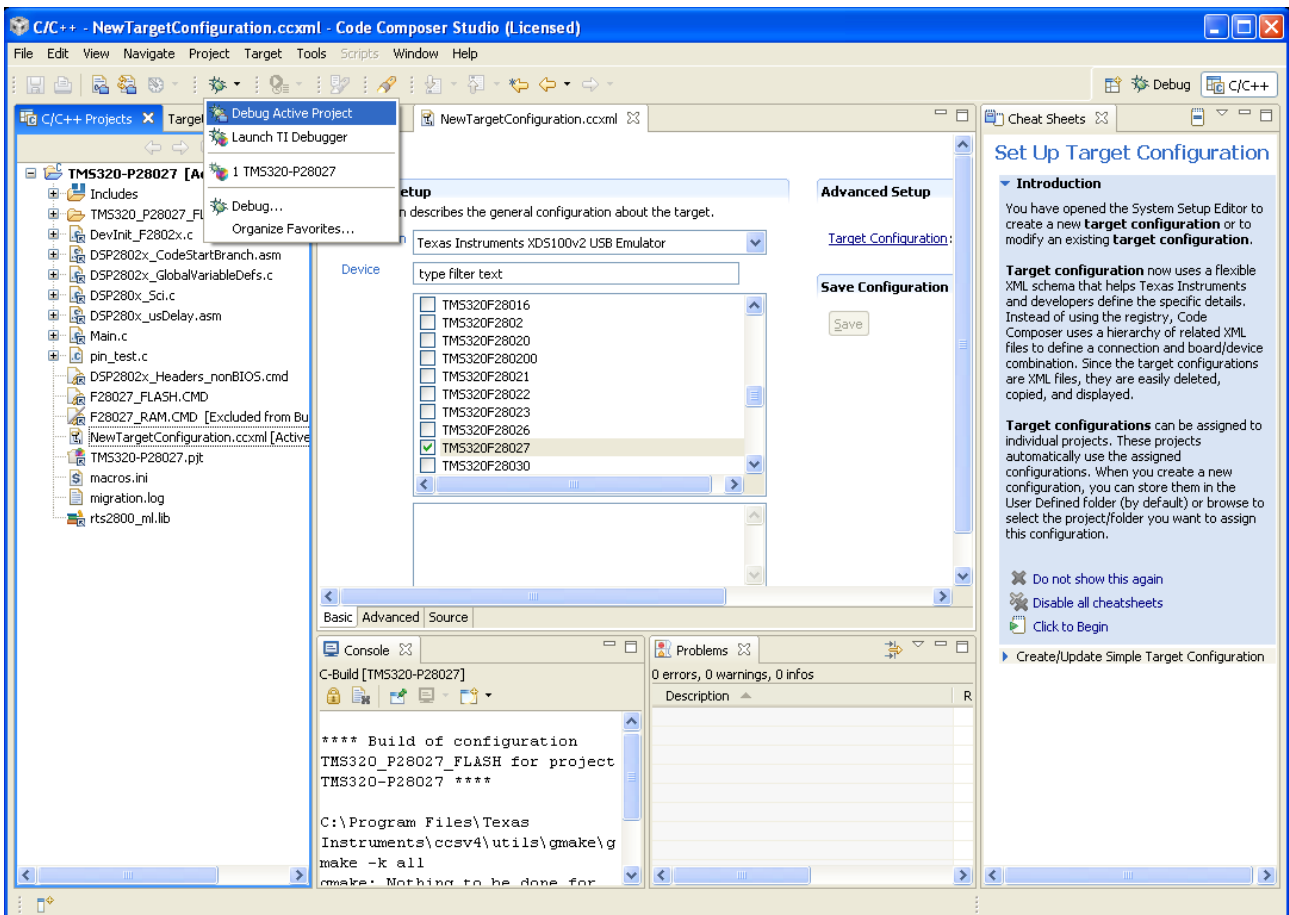
After that for Device select TMS320F28027:



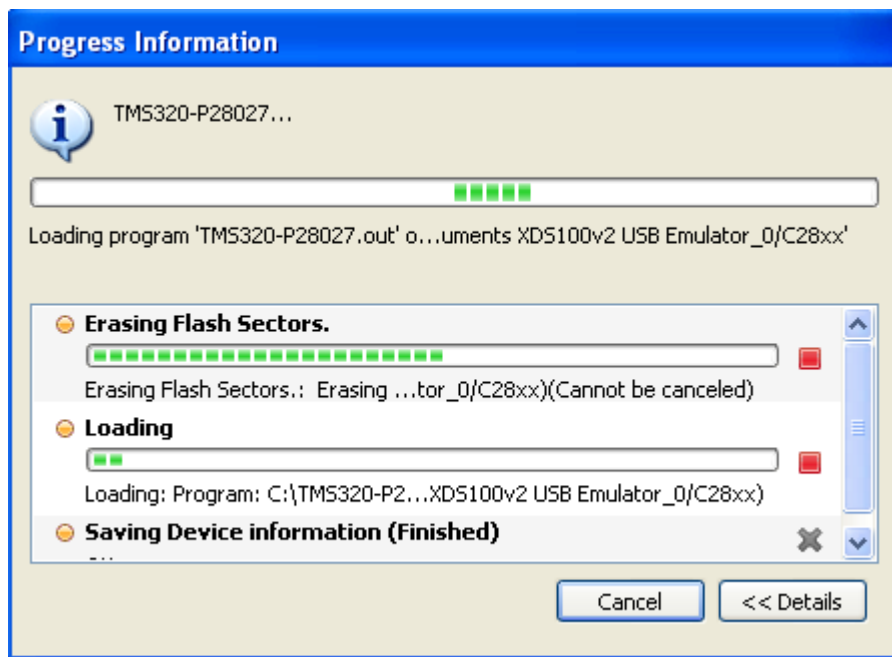
Press "Save" button to save this configuration.



Finally, you can debug your project:



New window will appear with Progress Information:



After this operation has finished, you can enjoy your project applications by using the toolbar shortcuts shown with the red arrow on the picture below:

