

TMX320-P28027 development board

Users Manual



All boards produced by Olimex are RoHS compliant

Rev.A, October 2009

Copyright(c) 2009, OLIMEX Ltd, All rights reserved

INTRODUCTION

TMX320-P28027 is development board with TMS320F28027 microcontroller from Texas Instruments. The board have everything necessary to build simple applications: Reset circuit, trimmer potentiometer, clock circuit, USB, JTAG, user button, most of the GPIOs are on prototype area and extension headers, where you can connect your additional circuits. The board have very competitive pricing and is very good for people who want to learn DSPs.

BOARD FEATURES

- MCU: TMS320F28027 32KB Flash, 6 KB SARAM, 4.6 MSPS 12Bit ADC, SPI, RS232, I2C;
- JTAG connector;
- USB-to-RS232 convertor allow easy to power board and to connect to notebooks and decent computers without RS232 port;
- UEXT connector for connection to other Olimex modules as MOD-NRF24Lx, MOD-MP3, etc.;
- MOTOR control connector (for add on modules with ADC, PWM, Interrupt signals available);
- User button;
- Trimmer potentiometer connected to Analog input;
- power supply LED;
- user status LED;
- RST button;
- external power supply jack for AC or DC power supply;
- Voltage regulator + power supply filtering capacitor;
- prototype area with 0.1" step, Vcc + GND bus;
- PCB: FR-4, 1.5 mm (0,062"), green soldermask, white silkscreen component print;
- Dimensions: 140x100 mm (5.5x3.9").

ELECTROSTATIC WARNING

The TMX320-P28027 development board is shipped in protective anti-static packaging. The board must not be subject to high electrostatic potentials. General practice for working with static sensitive devices should be applied when working with this board.

BOARD USE REQUIREMENTS

Cables: Depends on the Programmers/Debuggers you use. If you use TMS320-JTAG, you will need LPT cable, if you use TMS320-JTAG-USB, you will need 1.8 meter USB A-B cable.

Hardware: Power supply adapter 4.5-6VAC or 6-9VDC (if the board is not powered from USB host).
[TMS320-JTAG](#), or [TMS320-JTAG-USB](#) for programming and debugging or similar tool.

NOTE: When you use TMS320-JTAG-USB, switch off USB cable from TMX320-P28027 and power supply the board from PWR Jack connector (6-9VDC).

Software: Texas Instruments Code Composer Studio 3.30 and drivers- available on the www.ti.com

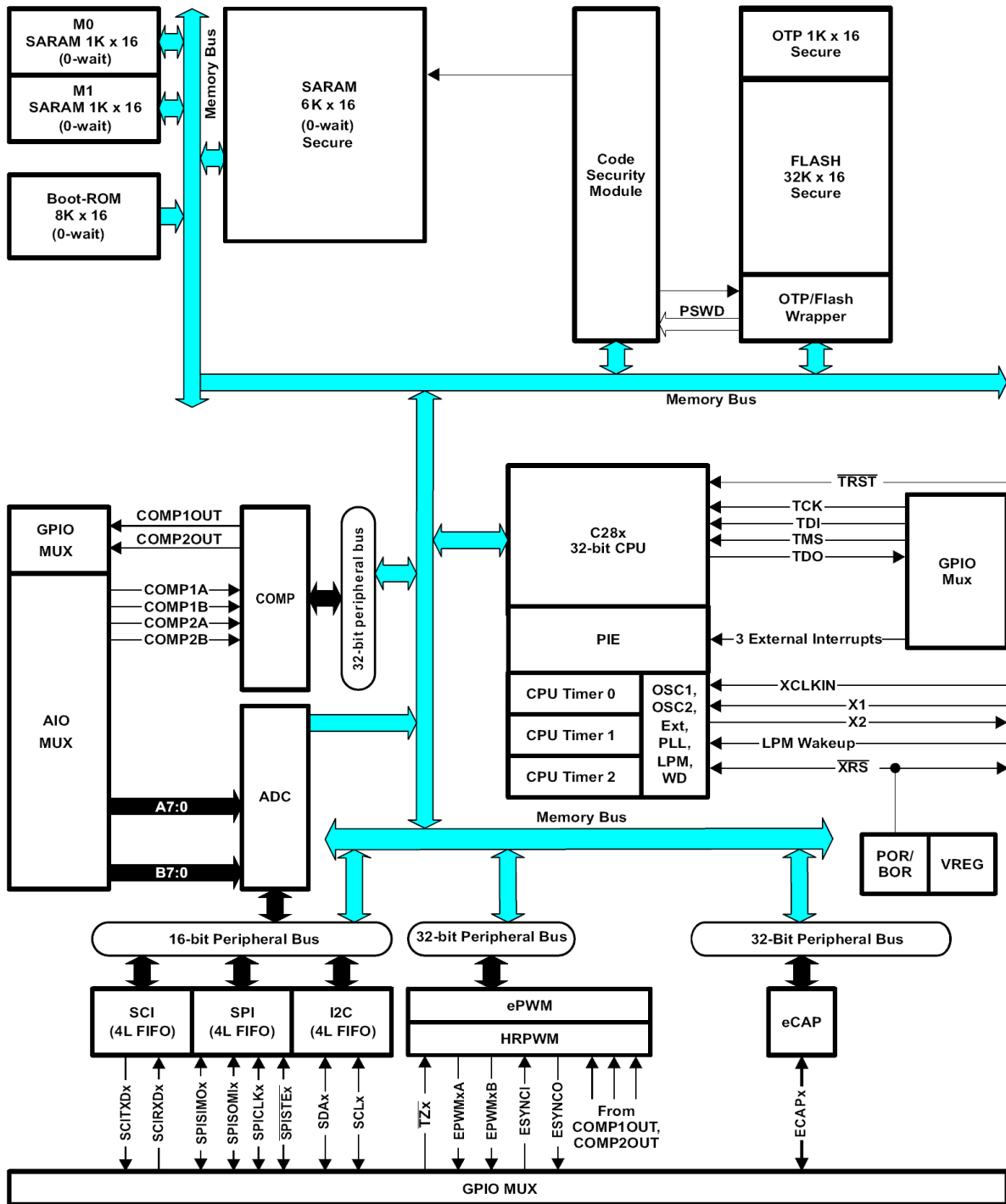
PROCESSOR FEATURES

The TMS320F28027 processor has the following features:

- High-Efficiency 32-Bit CPU (TMS320C28x™)
 - 60 MHz (16.67-ns Cycle Time)
 - 40 MHz (25-ns Cycle Time)
 - 16 x 16 and 32 x 32 MAC Operations
 - 16 x 16 Dual MAC
 - Harvard Bus Architecture
 - Atomic Operations
 - Fast Interrupt Response and Processing
 - Unified Memory Programming Model
 - Code-Efficient (in C/C++ and Assembly)
- Low Device and System Cost:
 - Single 3.3-V Supply
 - No Power Sequencing Requirement
 - Integrated Power-on Reset and Brown-out Reset
 - Small Packaging, as Low as 38-Pin Available
 - Low Power
 - No Analog Support Pins
- Clocking:
 - 2 Internal Zero-pin Oscillators
 - On-chip Crystal Oscillator/External Clock Input
 - Dynamic PLL Ratio Changes Supported
 - Watchdog Timer Module
 - Missing Clock Detection Circuitry
- Up to 22 Individually Programmable Multiplexed GPIO Pins With Input Filtering

- Peripheral Interrupt Expansion (PIE) Block That Supports All Peripheral Interrupts
- Three 32-Bit CPU Timers
- Independent 16-bit Timer in Each ePWM Module
- On-Chip Memory
 - On-chip FLASH (16-bit word) - 32K
 - On-Chip SARAM (16-bit word) - 6K
 - OTP, Boot ROM Available
- 128-Bit Security Key/Lock
 - Protects Secure Memory Blocks
 - Prevents Firmware Reverse Engineering
- Serial Port Peripherals
 - One SCI (UART) Module
 - One SPI Module
 - One Inter-Integrated-Circuit (I2C) Bus
- Advanced Emulation Features
 - Analysis and Breakpoint Functions
 - Real-Time Debug via Hardware
- Enhanced Control Peripherals
 - Enhanced Pulse Width Modulator (ePWM)
 - High-resolution PWM (HRPWM)
 - Enhanced Capture (eCAP)
 - Analog-to-Digital Converter (ADC)
 - On-Chip Temperature Sensor
 - Comparator
- Package
 - 48-Pin PT Plastic Quad Flatpack (PQFP)

BLOCK DIAGRAM

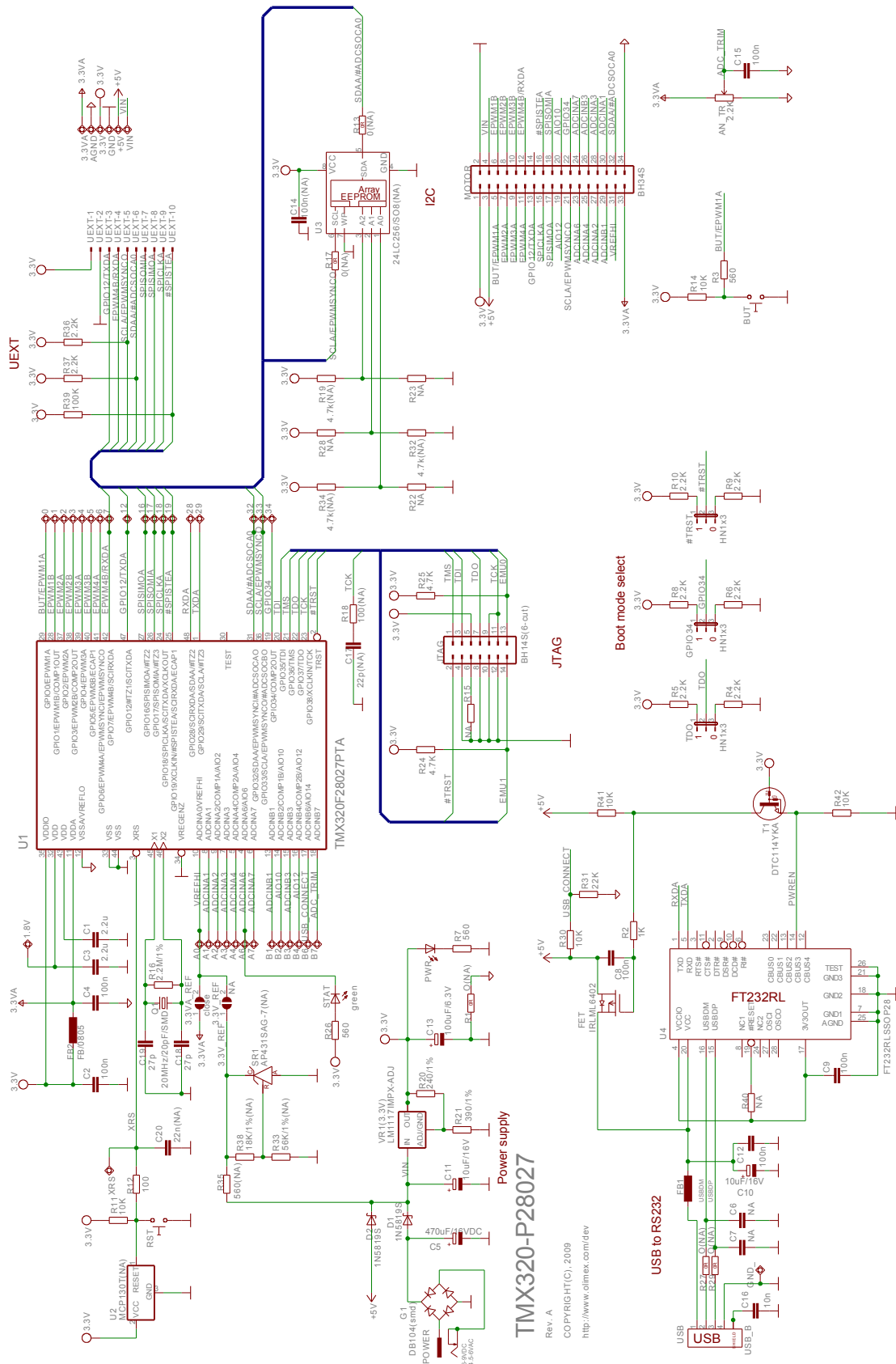


A. Not all peripheral pins are available at the same time due to multiplexing.

MEMORY MAP

		Data Space	Prog Space
Low 64K (24x/240x Equivalent Data Space)	0x00 0000	<i>M0 Vector RAM (Enabled if VMAP = 0)</i>	
	0x00 0040	M0 SARAM (1K x 16, 0-Wait)	
	0x00 0400	M1 SARAM (1K x 16, 0-Wait)	
	0x00 0800	Peripheral Frame 0	Reserved
	0x00 0D00	PIE Vector - RAM (256 x 16) (Enabled if VMAP = 1, ENPIE = 1)	
	0x00 0E00	Peripheral Frame 0	Reserved
	0x00 2000	Reserved	
	0x00 6000	Peripheral Frame 1 (4K x 16, Protected)	Reserved
	0x00 7000	Peripheral Frame 2 (4K x 16, Protected)	
	0x00 8000	L0 SARAM (4K x 16) (0-Wait, Secure Zone + ECSL, Dual Mapped)	
	0x00 9000	Reserved	
	0x3D 7800	User OTP (1K x 16, Secure Zone + ECSL)	
	0x3D 7C00	Reserved	
	0x3D 7C80	Calibration Data	
0x3D 7CC0	Reserved		
0x3D 8000	Reserved		
High 64K (24x/240x Equivalent Program Space)	0x3F 0000	FLASH (32K x 16, 4 Sectors, Secure Zone + ECSL)	
	0x3F 7FF8	128-Bit Password	
	0x3F 8000	L0 SARAM (4K x 16) (0-Wait, Secure Zone + ECSL, Dual Mapped)	
	0x3F 9000	Reserved	
	0x3F E000	Boot ROM (8K x 16, 0-Wait)	
	0x3F FFC0	Vector (32 Vectors, Enabled if VMAP = 1)	

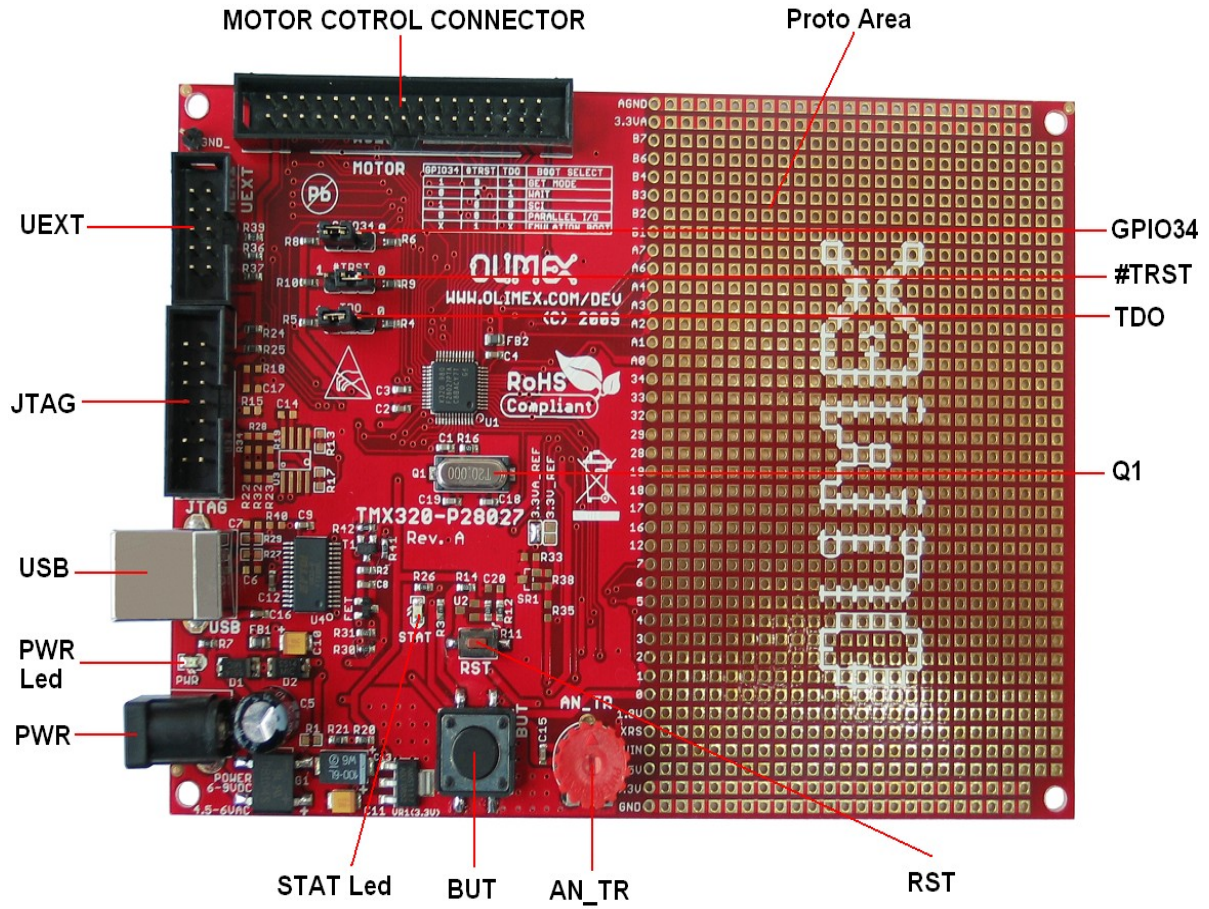
SCHEMATIC



TMX320-P28027

Rev. A
 CO-PYRIGHT(C), 2009
<http://www.dalmech.com/dev>

BOARD LAYOUT



POWER SUPPLY CIRCUIT

TMX320-P28027 board can take power from POWER connector (4.5-6VAC or 6-9VDC), from VIN on the prototype area (5-9VDC), from MOTOR connector pin 4 (5-9VDC) and from USB connector.

The board power consumption is around 90mA with all peripherals and MCU running at full speed.

RESET CIRCUIT

Reset circuit includes R11 (10k), R12 (100 Ohm) and TMS320F28027 pin 3 (XRS). Although on the schematic is made provision for external reset by the RST button.

CLOCK CIRCUIT

Quartz crystal 20Mhz is connected to TMS320F28027 pin 45 (X1) and pin 46 (X2).

JUMPER DESCRIPTION

The jumpers TDO, GPIO34 and #TRST selects boot mode source. The table bellow shows boot mode variants.

BOOT SELECT	TDO	GPIO34	#TRST
GET MODE	1	1	0
WAIT	1	0	0
SCI	0	1	0
I2C	1	0	0
PARALLEL I/O	0	0	0
EMULATION BOOT	X	X	1

GPIO34



1 0

#TRST



1 0

TDO



1 0

Default state: GET MODE

3.3VA_REF



Connects VREFHI to analog 3.3 V.
Default state is closed.

3.3V_REF



Gives user opportunity to connect VREFHI to external 3.3V power source.
Default state is open.

INPUT/OUTPUT

Reset button with name **RST** – connected to TMS320F28027 pin 3 (XRS).

User button with name **BUT** – connected to TMS320F28027 pin 29 (GPIO0/EPWM1A).

Status LED (green) with name **STAT** – connected to TMS320F28027 pin 4 (ADCINA6).

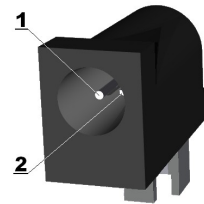
Trimmer potentiometer with name **AN_TR** – connected to TMS320F28027 pin 18 ADCINB7.

Power supply LED (red) with name **PWR** – indicates that 3.3V is present.

EXTERNAL CONNECTOR DESCRIPTION

PWR:

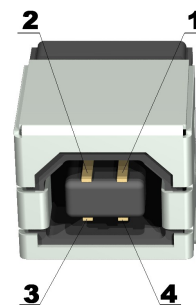
Pin #	Signal Name
1	From 4.5 to 6VAC or from 6 to 9VDC
2	GND



USB:

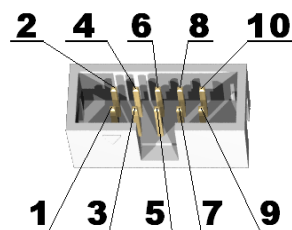
The USB is made with USB to serial converter chip FT232RL of FTDI.
 RXD and TXD pins of the converter is connected to SCI_A module of TMS320F28027 respective to GPIO28/SCIRXDA (pin 48) and GPIO29/SCITXDA (pin 1)

Pin #	Signal Name
1	+5V
2	USBDM
3	USBDP
4	GND



UEXT:

Pin #	Signal Name	Pin #	Signal Name
1	3.3V	2	GND
3	GPIO12/TXDA	4	EPWM4B/RXDA



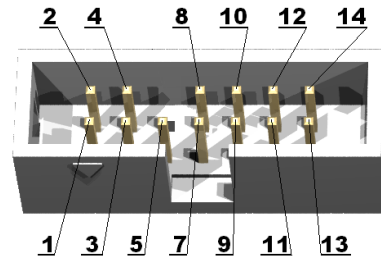
5	SCLA/EPWMSYNCO	6	SDAA/#ADCSOCA0
7	SPISOMIA	8	SPISIMOA
9	SPICLKA	10	#SPISTEA

UEXT is a universal connector which Olimex uses on it's development boards to attach different "modules" on the connector there are 3.3V power supply and UART, SPI and I2C interface. Olimex have range of modules like MOD-MP3, MOD-nRF24Lx, MOD-RFID125, MOD-NOKIA6610 and many others to come.

JTAG:

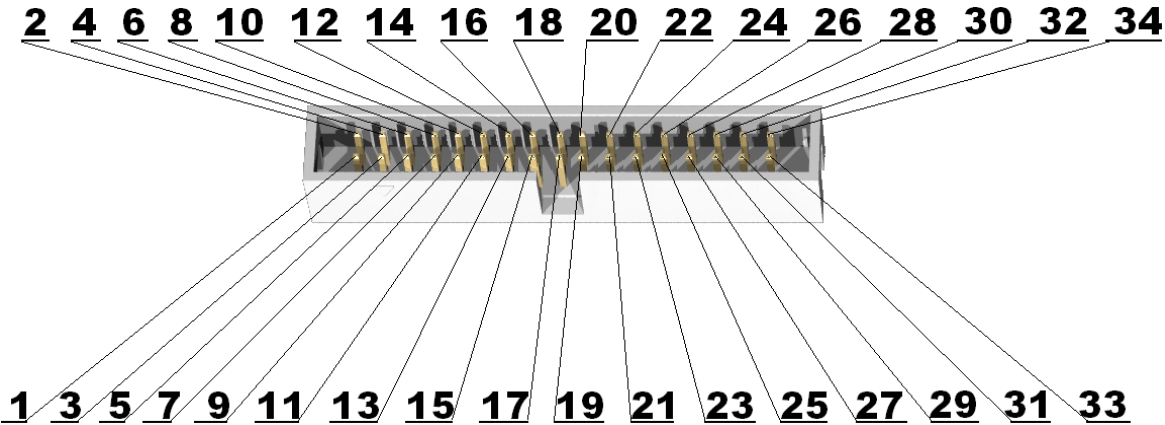
TI standard 2x7 pin JTAG connector

Pin #	Signal Name	Pin #	Signal Name
1	TMS	2	#TRST
3	TDI	4	GND
5	3.3V	6	Removed
7	TDO	8	GND
9	TCK	10	GND
11	TCK	12	GND
13	EMU0	14	EMU1



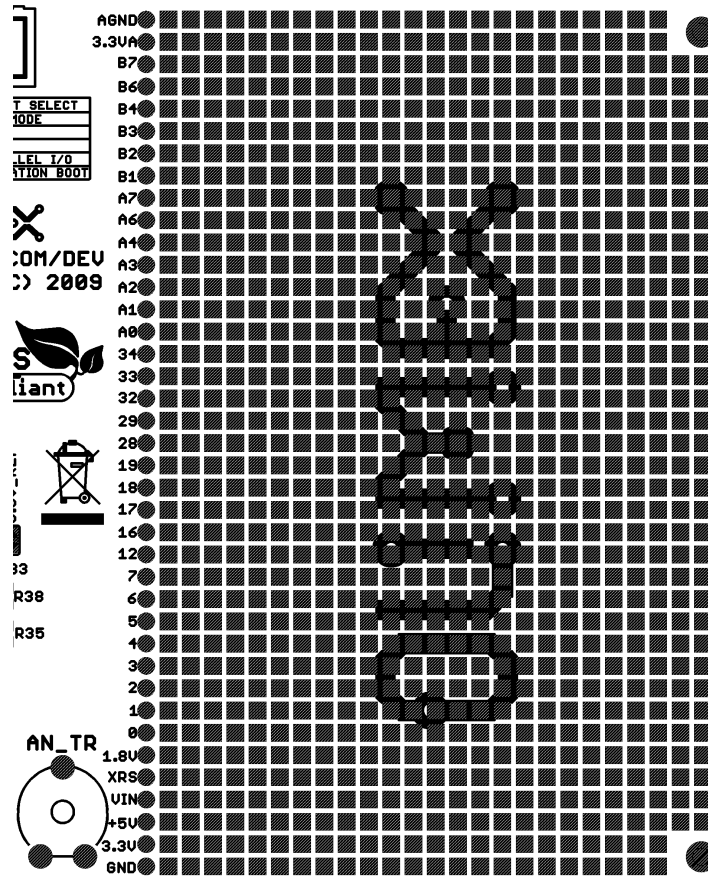
MOTOR CONTROL CONNECTOR:

MOTOR control connector provides signals for add on modules with ADC, PWM, Interrupt signals available on it.



Pin #	Signal Name	Pin #	Signal Name
1	3.3V	2	GND
3	+5V	4	VIN
5	BUT/EPWM1A	6	EPWM1B
7	EPWM2A	8	EPWM1B
9	EPWM3A	10	EPWM3B
11	EPWM4A	12	EPWM4B/RXDA
13	GPIO12/TXDA	14	NC
15	SPICLKA	16	#SPISTEA
17	SPISIMOA	18	SPISOMIA
19	AIO12	20	AIO10
21	SCLA/EPWMSYNCO	22	GPIO34
23	ADCINA6	24	ADCINA7
25	ADCINA4	26	ADCINB3
27	ADCINA2	28	ADCINA3
29	ADCINB1	30	ADCINA1
31	VREFHI	32	SDAA/#ADCSOCA0
33	3.3VA	34	GND

PROTO AREA:



Pin #	Signal Name	Pin #	Signal Name	Pin #	Signal Name
AGND	AGND	A1	ADCINA1	6	EPWM4A
3.3VA	V+	A0	VREFHI	5	EPWM3B
B7	ADC_TRIM	34	GPIO34	4	EPWM3A
B6	USB_CONNECT	33	SCLA/EPWMSYNCO	3	EPWM2B
B4	AIO12	32	SDAA/#ADCSOCA0	2	EPWM2A
B3	ADCINB3	29	TXDA	1	EPWM1B
B2	AIO10	28	RXDA	0	BUT/EPWM1A
B1	ADCINB1	19	#SPISTEA	1.8V	VDD1
A7	ADCINA7	18	SPICLKA	XRS	XRS
A6	ADCINA6	17	SPISOMIA	VIN	VIN
A4	ADCINA4	16	SPISIMOA	+5V	+5V
A3	ADCINA3	12	GPIO12/TXDA	3.3V	VCC
A2	ADCINA2	7	EPWM4B/RXDA	GND	GND

SPI

The SPI is a high-speed, synchronous serial I/O port that allows a serial bit stream of programmed length (one to sixteen bits) to be shifted into and out of the device at a programmable bit-transfer rate. Normally, the SPI is used for communications between the MCU and external peripherals or another processor. Typical applications include external I/O or peripheral expansion through devices such as shift registers, display drivers, and ADCs. Multi-device communications are supported by the master/slave operation of the SPI. The SPI contains a 4-level receive and transmit FIFO for reducing interrupt servicing overhead.

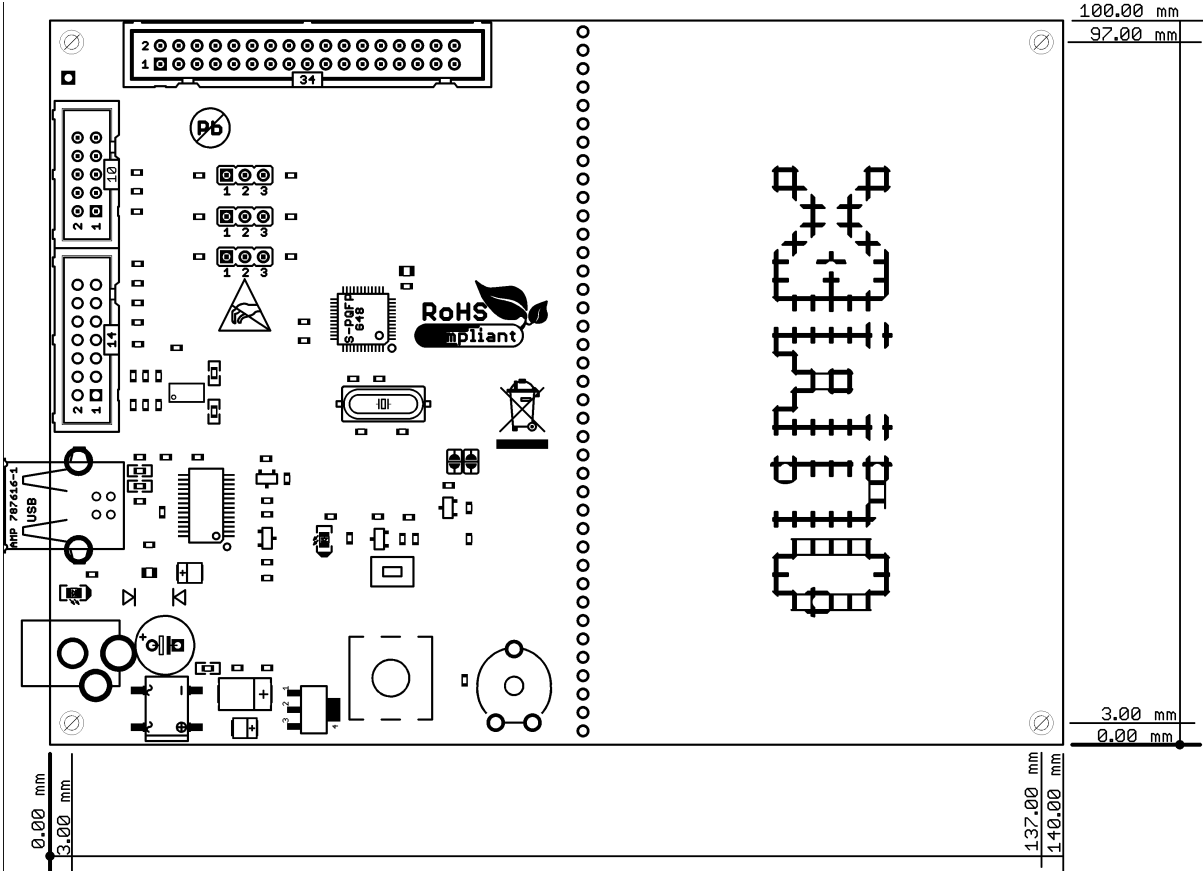
SCI

The serial communications interface is a two-wire asynchronous serial port, commonly known as UART. The SCI contains a 4-level receive and transmit FIFO for reducing interrupt servicing overhead.

I2C

The inter-integrated circuit (I2C) module provides an interface between a MCU and other devices compliant with Philips Semiconductors Inter-IC bus (I2C-bus) specification version 2.1 and connected by way of an I2C-bus. External components attached to this 2-wire serial bus can transmit/receive up to 8-bit data to/from the MCU through the I2C module. The I2C contains a 4-level receive and transmit FIFO for reducing interrupt servicing overhead.

MECHANICAL DIMENSIONS:



AVAILABLE DEMO SOFTWARE:

DEMO1. Blink LED C Source and CCS 3.3 project files
 Blinks the on-board LED.

ORDER CODE:

TMX320-P28027 - assembled and tested (no kit, no soldering required)

How to order?

You can order to us directly or by any of our distributors.

Check our web www.olimex.com/dev for more info.

Revision history:

REV.A create October 2009

Disclaimer:

© 2009 Olimex Ltd. All rights reserved. Olimex®, logo and combinations thereof, are registered trademarks of Olimex Ltd. Other terms and product names may be trademarks of others.

The information in this document is provided in connection with Olimex products. No license, express or implied or otherwise, to any intellectual property right is granted by this document or in connection with the sale of Olimex products.

Neither the whole nor any part of the information contained in or the product described in this document may be adapted or reproduced in any material form except with the prior written permission of the copyright holder.

The product described in this document is subject to continuous development and improvements. All particulars of the product and its use contained in this document are given by OLIMEX in good faith. However all warranties implied or expressed including but not limited to implied warranties of merchantability or fitness for purpose are excluded.

This document is intended only to assist the reader in the use of the product. OLIMEX Ltd. shall not be liable for any loss or damage arising from the use of any information in this document or any error or omission in such information or any incorrect use of the product.